

# **Bale Eco-Region Sustainable Management Programme**

**Six Months Report - First Semester 2007**

**January 2007 – June 2007**

**FARM-Africa – SOS Sahel Ethiopia  
Participatory Natural Resource Management Programme**

*and*

**Oromia Bureau of Agriculture and Rural Development**

**Reporting to;  
The Donor Consortium: The Netherlands Embassy, The Norwegian  
Embassy, and The Embassy of Ireland.**

August 2007  
Addis Ababa

## Table of Contents

<b>1. PROGRAMME DEVELOPMENT CONTEXT AND BACKGROUND .....</b>	<b>1</b>
<b>2. PROGRAMME GOAL, PURPOSE AND OUTPUTS.....</b>	<b>2</b>
2.1 GOAL.....	2
2.2 PURPOSE.....	2
2.3 OUTPUTS .....	2
<b>3. MAP OF BERSMP AREA.....</b>	<b>3</b>
<b>4. PROGRAMME PROGRESS - ACTIVITY REVIEW .....</b>	<b>4</b>
4.1 ECO-REGION(S) PLAN COMPLETED AND BEING USED.....	4
4.2. STRONGER GOVERNMENT AND COMMUNITY INSTITUTIONAL CAPACITY FOR SUSTAINABLE NRM.....	5
4.3 FUNCTIONAL AND SUSTAINABLE NRM AND CONSERVATION SYSTEMS IN PLACE, INCORPORATING DIFFERENT ENVIRONMENT AND COMMUNITY NEEDS. ....	7
4.4. COMMUNITY NATURAL RESOURCE BASED LIVELIHOODS DIVERSIFIED.....	8
4.5. SUSTAINABLE FINANCING MECHANISMS FOR THE BALE ECOREGION WHICH BENEFIT GOVERNMENT AND COMMUNITY.....	11
4.6. IMPROVED / APPROPRIATE LEGAL, POLICY AND REGULATORY FRAMEWORKS FOR ECOREGION(S) PLANNING, CBNRM AND PROTECTED AREAS.....	12
<b>5. ACTIVITIES ANALYSIS.....</b>	<b>14</b>
<b>6. OFFICE CONSTRUCTION .....</b>	<b>19</b>
<b>7. CONSULTANCIES AND SPECIAL STUDIES.....</b>	<b>19</b>
<b>8. VISITS TO THE BERSMP .....</b>	<b>19</b>
<b>9. ACTIVITIES AND BUDGET PLANNING FOR 2007 - SECOND SEMESTER.....</b>	<b>19</b>
<b>10. FINANCIAL UTILIZATION OF 1ST SEMESTER 2007.....</b>	<b>19</b>

### **List of Figures**

Figure 1: Bale Eco-Region Project site.....	3
---	---

### **List of Tables**

Table 1: Progress against plan .....	14
--------------------------------------	----

## Acronyms

AAU	Addis Ababa University
BERSMP	Bale EcoRegion Sustainable Management Programme
BMNP	Bale Mountains National Park
BMNP-GMP	Bale Mountains National Park – General Management Plan
CBO	Community based Organisation
CDF	Community Development Fund
CCG	Community Conservation Grant
CDM	Clean Development Mechanism
CIP	Community Initiative Promotion
EFCF	Ethiopian Forest Coffee Forum
FeMSDA	Federal Micro and Small Enterprise Development Agency
FFE	Forum for Environment
FZS	Frankfurt Zoological Society
GEF	Global Environment Facility
GIS	Geographical Information Systems
GTZ	German Technical Corporation
INBAR	International Network for Bamboo and Rattan
IUCN	The World Conservation Union
IUCN EARO	World Conservation Union – East Africa Regional Office
MoARD	Ministry of Agriculture and Rural Development
NR&EP	Natural Resource and Environmental Protection
OBARD	Oromiya Bureau of Agriculture and Rural Development
PFM	Participatory Forest Management
PNRM	Participatory Natural Resource Management
RAC	Regional Advisory Committee
RCMRD	Regional Centre of Mapping of Resources for Development
UNDP	United Nations Development Programme
TNA	Training Needs Assessment
WCC	Woreda Coordinator Committee
ZSC	Zonal Steering Committee

# 1. Programme Development Context and Background

The Bale Mountains area of Ethiopia, is characterized by priority forest areas, mountains and valleys, grasslands and agricultural land. The Bale Mountains National Park, at the centre of the EcoRegion, represents the largest area of Afroalpine habitat on the African continent. This area forms the watershed of the Bale Massif, which is critical for the livelihoods and well being of hundreds of thousands of people in the highlands of southeast Ethiopia and an estimated 12 million people in the lowlands of southeast Ethiopia, Northern Kenya and Somalia. The Herenna Forest, covering the southern part of the mountains, is the second largest stand of moist tropical forest in Ethiopia. The forests together with the Afro-alpine plateaux are host to a globally unique and diverse fauna and flora, including a significant number of rare and endemic species.

The Bale Mountains is relatively environmentally intact. However, negative pressures on natural resources in the Bale Mountains are rapidly growing. Unsustainable natural resource exploitation and degradation throughout the area is increasingly threatening the sustainability of the environment, food security and sustainable livelihoods. Bale's rural communities are seeking to meet their livelihood needs by expanding exploitation of local natural resources. Current resource exploitation is opportunistic and unregulated. Agricultural land is expanding rapidly, grazing areas are heavily degraded necessitating the search for new pasture, forest areas are being cut and cleared, and water systems disrupted. There are no land use management plans. Land use rights and ownership is confused and there is no control of resource use. Unplanned and unrestricted settlement is a significant and mounting problem. Existing settlements are growing, and new settlements are appearing in previously unsettled and environmentally sensitive areas.

The Oromia Regional Government has now commenced the implementation of a new programme intervention for the area that focus' on expanded conservation and development initiatives, bringing local communities into a central role in sustainable natural resource management, and building sustainable natural resource based livelihoods. The idea is to involve local communities in the sustainable management of the area as the natural resource management leaders, supported by government services, across the whole Bale Massif. The new Bale EcoRegion Sustainable Management Programme (BERSMP) draws widely on national and international experience of specialist conservation and development practitioners.

The BERSMP is an operational partnership between;  
The **Government of Ethiopia** – The Oromiya Regional Government, Bureau of Agriculture and Rural Development and Bureau of Finance and Economic Development and **Non Government Organisations** - FARM Africa and SOS Sahel, through their joint Participatory Natural Resource Management Programme. Secondary partners include, the GTZ SUN unit, MoARD/UNDP/GEF Protected Areas Programme, World Bank Conservation and Sustainable Use of Medicinal Plants Programme, SOS Sahel Pastoral Livelihoods programme, and the Ethio-Italian Cooperation Arsi-Bale rural development programme. The BERSMP has been designed as a two phase, six year intervention. Each

phase is scheduled to last three years. Phase 1 will run from 2006 – 2008. In the first three years the programme is working on four priority Woredas; Goba, Nensebo, Dollo and Harrena Buluk.

## **2. Programme Goal, Purpose and Outputs.**

### **2.1 Goal**

The programme **Goal** is;

The unique biodiversity and vital ecological processes of the Bale Mountains Eco-Region(s), and the social and economic well-being of communities dependent on the Eco-Region's natural resources, are mutually and sustainably enhanced.

### **2.2 Purpose**

The programme **Purpose** is;

To support the government and local communities in the sustainable management of natural resources in the Bale Eco-Region(s) while contributing to sustainable livelihoods and the local and national economy.

### **2.3 Outputs**

The six programme **Outputs** are;

1. Eco-Region(s) plan completed and being used.
2. Stronger Government and Community institutional capacity for sustainable NRM.
3. Functional and sustainable NRM and conservation systems in place, incorporating different environment and community needs.
4. Community natural resource based livelihoods diversified.
5. Sustainable financing mechanisms in place for the Bale Eco-Region(s) which benefit government and communities.
6. Improved / appropriate legal, policy and regulatory frameworks for Eco-Region(s) planning, CBNRM and protected areas.

### 3. Map of BERSMP Area

The map below shows the BERSMP programme area. Note that the map shows that four of the originally selected Woredas, Kokosa, Dodola, Adaba and Nenebebo, now fall in the newly created West Arsi Zone. After discussions with the relevant government offices it was decided that BERSMP will work in both zones. The programme priority woredas are Goba, Dollo, Harrena Buluk (all three in the Bale zone) and Nenebebo (in West Arsi zone).

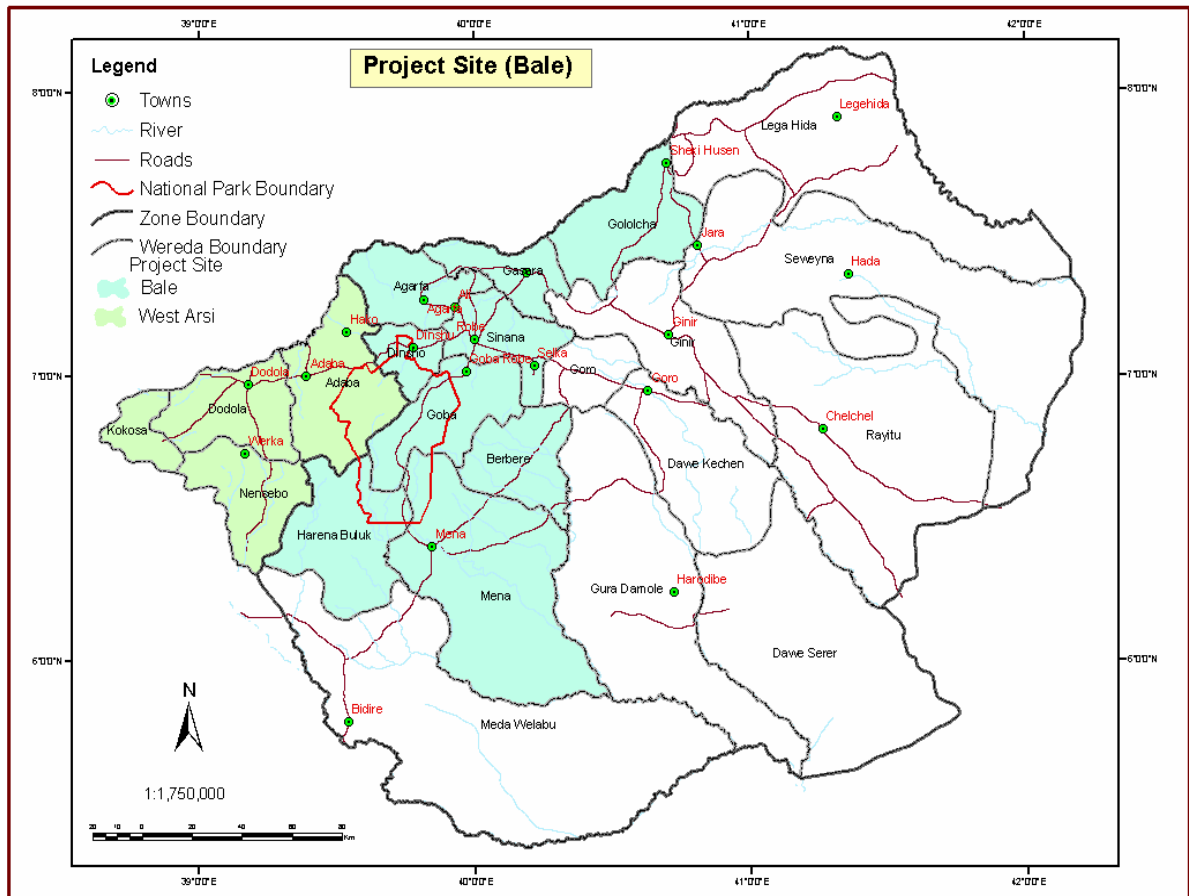


Figure 1: Bale Eco-Region Project site

## 4. Programme Progress - Activity Review

### 4.1 *Eco-Region(s) plan completed and being used.*

Resource information gathering – secondary data analysis – information gap analysis

Natural Resource / Human mapping and analysis

Information gap filling

Eco-Region(s) framework plan

Target resource sites identified

Plan monitoring, review and adaptation

Specific skills training

Zone / Region database centre established

#### 4.1.1 Resource information gathering

Initial GIS and Satellite Images data has been sourced through the Ethio-Italian Arsi-Bale Rural Development Programme. Discussions are ongoing with FZS about how to produce compatible GIS data for the National Park and the wider Eco-Region. It has been agreed that the FZS's GIS specialist and the BERSMP planning specialist will work closely together in developing GIS data and resources.

#### 4.1.2. Natural Resource Human mapping and analysis

The planning specialist has begun to produce initial maps of the Eco-Region and particularly the natural resources of the priority woredas.

Satellite Images for the entire area have been purchased with the support and advice of the Regional Centre for the Mapping of Resources for Development (RCMRD) in Nairobi. This data set will form the basis of the area being mapped.

#### 4.1.3 Information gap filling

A number of resource base investigations are underway. BERSMP is working with FZS in the joint support of students/ researchers who are working in the Eco-Region to investigate critical natural resource issues. Topics of investigation include;

- ❖ Natural resource economic values - C. Watson, Imperial College London;
- ❖ Indigenous ecological knowledge - L. Nimmo, Uui. Wales Bangor;
- ❖ Mountain Nyala population dynamics and sustainable Trophy Hunting – Anagaw Atickem, AAU / University of Oslo.

#### 4.1.4 Eco-Region(s) framework plan

An Eco-region framework document has been developed and circulated to key partners for comment and critique. As the concept of Eco-Regional planning is taking shape the programme has identified different planning scales – Eco-Region (Bale) 1:125000, Woreda 1:50,000, Kebele 1: 10,000. At each scale the three themes of **Natural Resources** (forest / grassland / water) / **Social Issues** (infrastructure / schools / clinics) / **Economic Aspects** (agriculture land / NTFPS / tourism), will be mapped.

#### **4.1.5 Target resource sites identified**

Within the four priority woredas, 2 kebeles have been selected in order to commence the set up of the programme:

- ❖ Goba – Fassil Angeso and Ittitu Sora
- ❖ Nensebo – Huro Baro and Harawa Kuni
- ❖ Harrena Buluk – Kumbi and Shawe
- ❖ Dollo – Wabero and Chiri

The aim is to develop and implement natural resource (grassland / forest / water) management plans for all these areas.

#### **4.1.6 Specific skills training**

Links have been made with the Regional Centre for Mapping of Resources for Development (RCMRD) in Nairobi, Kenya. The Bale Field Coordinator visited the centre in May. The Planning Specialist and two government planning officers (GIS specialists) attended an introductory training week at the centre, in June.

An MoU setting out collaboration between the centre and the programme is under development.

### ***4.2. Stronger Government and Community institutional capacity for sustainable NRM.***

Government capacity needs assessment

Community capacity needs assessment

Government capacity needs delivered

Community capacity needs delivered

Government – Government co-ordination and communication

Community based Organisation identification, strengthening and establishment

#### **4.2.1 Government and Community Training Needs Assessment (TNA)**

TNA was started in January 2007 with an early scoping visit by the then acting programme Manager Ginjo Giya. During his visit he made a number of community and government office visit and carried out semi-structured interviews based around community capacity and skills gaps.

A more formal; Training Needs Assessment was carried out with government partners over a week long programme training and introduction. During this activity TNA exercises were facilitated. Woreda Government Staff were asked to work in woreda groups to identify the key skills needed to implement the various aspects of the programme.

The results of the Woreda TNA showed that the concepts and activities planned in BERSMP are not necessarily 100% new but all groups requested Eco-Region planning training, participatory natural resource management training, and forest based livelihoods training. Methods of learning requested also varied from the formal (Diploma-BSc upgrade), to informal (experience exchange visits).

TNA is envisaged to be on-going. At the community level, TNA will be carried out in a more specific manner as part of the process of promotion of new roles and skills. For example when setting up River management groups, specific skills gaps will be assessed and addressed.

#### **4.2.2 Government and Community capacity needs delivered**

A number of key training events have been carried out in the last six months period.

**Tanzanian learning visit** - In January the new programme team and selected government partners visited the IUCN East Africa Regional Office (IUCN-EARO). The event involved BERSMP staff and Government partners from Oromiya Region and Bale Zone visiting IUCN's innovative Village Environmental Planning Programme, in Rafuji District, Southern Tanzania. The aim of the visit was to give the participants important experience in holistic and integrated natural resource management planning at the village level. The group visited the local Rafuji District Government office, followed by a number of Village sites. Presentations and discussions with the village environmental groups concerning the development and implementation of the Village Environmental Management Programme were held. The visit was in part funded by IUCN-EARO and in part by BERSMP.

**Woreda level Programme training** - All the woredas were gathered together in Robe for a week's introduction to the BERSMP and to participatory planning procedures.

**Field based training in Participatory Natural resource mapping** - The BERSMP is designed around the core strategy of participation as a learning and enabling process. In order to introduce all programme stakeholders to this concept and practice, the first activities carried out in the field were participatory Natural Resource / Social Issue / Economic Opportunity mapping exercises.

**In country exchange visits** - A government and community team from Goba and Nensebo woredas visited the FARM-Africa PFM project site in Chilimo and the GTZ eco-tourism site at Wenchi lake.

A government and community team from Dollo and Harrena Buluk woredas also visited the SOS Sahel Ethiopia project site in Borana.

**Diploma – BSc upgrades** - Government woreda staff – 18 (Wondo Genet), 1 (Jimma), 2 (Hawaasa), 3 (Halymya), 2 (Ambo).

**Grade 10 – Diploma upgrades (Women education support programme)** - Government woreda staff – 26 (Wondo Genet)

**Natural Products Business learning tour – Kenya** - A programme team and selected government partners travelled to Kenya for a Natural Products Business learning tour. The event involved BERSMP staff and Government partners from Oromiya Region and

Bale Zone. Visits were made to Natural Health Products companies, a community-based organic herbs enterprise, a farm based essential oils and cosmetics enterprise, a cold pressed oils factory and a community based honey and silk enterprise.

#### **4.2.3 Government – Government co-ordination and communication**

**Regional Advisory Committee** – has been set up. The first meeting was held in February 2007.

**Zonal Steering committee** – has been set up in Bale zone. The group also met for the first time in February in order to select the Priority Woredas.

**Woreda Coordination Committee** - Woreda coordination committees have been set up at the four priority woredas. The WCC meet in each of the priority woredas in order to select the priority kebeles.

Office set up and Equipment – Office set up and Equipment support of the woreda level staff and the Regional and Zonal counterparts has been purchased. In Hareenna Buluk (a new woreda) and Nensebo woreda the programme was requested to consider the lack of facilities and services that exist at the two sites. Lack of office space has meant the programme has looked to refurbish or extend existing government resources. Neither site has electricity. Therefore the programme is looking at Solar Power options.

#### **4.2.4. Community based Organisation identification, strengthening and establishment**

This work has not yet commenced

### ***4.3 Functional and sustainable NRM and conservation systems in place, incorporating different environment and community needs.***

Investigation – resource use and users  
Negotiation – plans and agreements  
Implementation – management – inc stakeholder monitoring  
Benefit sharing.  
Conflict Management  
Formalisation of new NRM systems

#### **4.3.1 Investigation – resource users and uses**

Participatory Natural Resource Mapping exercises have been carried in all 8 kebeles. This is the first step to setting up community based natural resource management.

Bamboo exploitation has been investigated in Shadem in Goba woreda.

#### **4.3.2 Negotiation – plans and agreements**

Linked to community discussions and exchange visit focus

### **4.3.3 Implementation – management – inc. stakeholder monitoring**

Linked to community discussions and exchange visit focus

MELCA support programme is ongoing focusing on environmental mentoring and learning between communities elders and youth groups. Community level training in Business management and entrepreneurship has also been carried out.

### **4.3.4. Benefit sharing**

This work has not yet commenced

### **4.3.5. Formalisation of new NRM systems**

This work has not yet commenced

## **4.4. Community natural resource based livelihoods diversified.**

Opportunities for NR livelihood diversification / income generation identified

Enterprise feasibility studies – Market analysis

Government / Community specific skills built

Linkages with public and private sector on NR enterprises developed

Livelihood diversification implementation – CDF / CCG

Scale up through Woreda offices

### **4.4.1 Opportunities for NR livelihoods diversification / income generation identified**

A number of studies have been carried out in the programme area.

**Sports fishing potential review** - the following key points are noted for further action;

- ❖ Potential undoubtedly exists for sports fishing in Bale.
- ❖ Little is known about Trout fish lifecycle, stocks or status – on-going research is needed.
- ❖ There is a need to clarify who is (will be / should be) involved in sports fishing enterprise management.
- ❖ There are a number of significant threats; catchment deforestation, illegal fishing (particularly *birbira* poisoning) , commercial fishing, river bank cultivation, clothes washing, livestock watering.
- ❖ The key challenge is how to set up a well run sports fishing enterprise from scratch.
- ❖ The Shaya river is recommended for pilot action.

In consideration of the rapid assessment report and the approaches of inclusive sustainable natural resource management and livelihoods diversification promoted by BERSMP, it is proposed that a pilot sports fishing enterprise is set up. This pilot enterprise will aim at developing a Sport Fishing model that can then be transferred to other rivers in the future.

### **Natural Resource Products opportunities & potentials study-**

The study was focused on the identification of opportunities for the improvement of local community livelihoods living with the resources. The study identified different opportunities to be implemented in different phases and priorities in the Bale mountains area. The natural products recommended for small scale producer commercialisation under this programme are as follows:

#### ***Phase 1. First priority***

- (i) Wild Coffee
- (ii) Comb honey.
- (iii) Bamboo
- (iv) Essential oils
- (v) Ecotourism

#### ***Phase 1. Second priority***

- (i) Trophy hunting and fishing:
- (ii) Medicinal areas – working with the already established traditional healers association on the commercialization aspect
- (iii) Essential oils
- (iv) Dried herbs/fruit/vegetables

#### ***Phase 2.***

- (i) Diversified bee-products: pollen, propolis, royal jelly and sting-less bee honey
- (ii) Essential oils
- (iii) Ecotourism, game hunting and fly fishing
- (iv) Dried herbs/fruit/vegetables.
- (v) Medicinal/nutraceutical:
- (vi) Cold pressed oils:
- (vii) Incubation Centre;
- (viii) Bamboo

### **4.4.2 Enterprise feasibility studies - Natural Products**

Building on the livelihood option identification work the following progress has been made in the set up and development of various natural products.

**Bamboo** - BERSMP has been involved in the new MoARD programme that is investigating the potential of Bamboo production in Ethiopia. The programme participated in the Government workshop held in December. Communication and information exchange started with some partners including the East Africa Bamboo Project, Federal Micro and Small Enterprise Development Agency (FeMSDA) and International Network for Bamboo and Rattan (INBAR); a global network of Bamboo and Rattan.

**Forest Coffee** - Discussions have begun with the Ethiopian Forest Coffee Forum (EFCF), about the potential of sustainable production of coffee from high forest areas.

FARM-Africa UK **cooperate** partnership department are making approaches to Café-Direct to discuss specialised purchasing and marketing of Bale's forest coffee

**Honey production** - Links to SOS Sahel Ethiopia's Amhara Apiculture Programme and Kaffa Community Initiative Promotion (CIP) are being made in order to learn from these progressive initiatives about successes in honey production processing and marketing.

**EcoTourism** - BERSMP have been involved in the consultancy work led by FZS to develop a Tourism strategy for the Bale area.

**Trophy Hunting** - Rift Valley Tours have been contacted to begin discussions about community involvement in Trophy Hunting

**Sports Fishing** - A specialist consultant has carried out a rapid review of sports fishing potential in Bale.

#### 4.4.3. Government / Community specific skills built

Exchange visits and tours.

#### 4.4.4. Linkages with public and private sector on NR enterprises developed

**Business Development in the Bale Eco-Region – Business contacts** - Promoting business development in the Bale Eco-Region is a key component of BERSMP. A key early stage of the process is to develop contacts with relevant and potential business partners.

##### Business Sector – Forest Coffee Trading

Organisation	Key business	Contact	On-going Issues
Oromia Coffee Cooperative Union	Coffee Trading	Obbo Tsefaye Jena	Promoting / marketing of forest coffee
Private Business	Coffee Trading	Matt	Marketing of Forest Coffee

##### Business Sector – Sustainable Forest Management Enterprise

Organisation	Key business	Contact	On-going Issues
WAJIB Forest Cooperative Union	Community based forest management	Obbo Kassa Ato Akililu	Support to Union under BERSMP/GTZ
Oromia Forest Enterprises	Sustainable Forest Management	Dr Girma Amete	Establishment of the Bale Enterprise - Collaboration

##### Business Sector – Forest Coffee Certification

Organisation	Key business	Contact	On-going Issues
Ethiopia Coffee Forest Forum	Coffee forest conservation	Dr Tadesse Dr Feyera	Sustainable Harvesting and Certification
Ethiopian Certification body	Certification	Ato Abate	Certification processes

#### **Business Sector – Trophy Hunting**

<b>Organisation</b>	<b>Key business</b>	<b>Contact persons</b>	<b>On-going Issues</b>
Trophy Hunting Association	Trophy Hunting	Mr Roussos	
Ethiopian Rift Valley Safaris	Trophy Hunting	Mr Roussos	

#### **Business Sector – Tourism**

<b>Organisation</b>	<b>Key business</b>	<b>Contact persons</b>	<b>On-going Issues</b>
Global Nomad	Tourism	Francis	tourism developmt.
Kibran Tours	Tourism	Assefa Azene	tourism developmt.

#### **Business Sector - Bamboo**

<b>Organisation</b>	<b>Key business</b>	<b>Contact persons</b>	<b>On-going Issues</b>
INBAR	Bamboo	Dr Mulageta Ato Melaku	Technical Advice experience sharing
Bamboo Enterprise	Bamboo	Dukum	

#### **Business Sector - Honey**

<b>Organisation</b>	<b>Key business</b>	<b>Contact persons</b>	<b>On-going Issues</b>
BEZA Honey	Honey	Haile	Honey investor
Amare Honey	Honey	Mulifred	Experience sharing
ApiNec	Honey	Wuberset	Experience sharing

#### **4.4.5. Livelihood diversification implementation – CDF / CCG**

Discussion with GTZ and the Adaba Dodola Wajib forest Cooperative Union have been on going.

#### **4.4.6. Scale up through Woreda offices**

This work has not yet commenced

### ***4.5. Sustainable financing mechanisms for the Bale Eco-Region which benefit government and community.***

Develop sustainable finance options

Increase / retain revenues / tax Benefit sharing – concessions / regional revenue – re-investment in local government services

Eco-Region sustainable financing options established

Concessions for consumptive utilisation (hunting / fishing)

Government capacity for sustainable financing built

#### **4.5.1 Develop sustainable finance options**

BEPSMP was represented at the Sir Nicolas Stern public lecture on the economics of Climate Change. The event was interesting both in its topic and in the opportunity to made contacts with the key actors in Climate Change and CDM in Ethiopia.

Studies will be conducted in the next semester to look into sustainable financing options at local, regional and national levels.

#### **4.5.2. Increase / retain revenues / tax Benefit sharing – concessions / regional revenue – re-investment in local government services**

**Oromia Forest Enterprise and BERSMP** - The Oromia region has recently issued a decree on the establishment of Forest Enterprises. This gives way for the formation of eight forest enterprises (for all forests in the region) and a supervisory agency. BERSMP has from the start been involved in contributing ideas to make sure the newly formed enterprises will embrace PNRM approaches and that current agreements between donors, NGOs and government will not be jeopardized as a result of the new development. And this has been successful.

#### **4.5.3 Eco-Region sustainable financing options established**

Links are being made with the UNDP and other organizations dealing with carbon opportunities in order to develop a Project Identification Note (PIN) for the Bale Eco-Region.

#### **4.5.4. Concessions for consumptive utilisation (hunting / fishing)**

This work is taking shape to be done in the next semester.

#### **4.5.5. Government capacity for sustainable financing built**

The BERSMP combined with multiple partners to jointly sponsor an International Conference on Participatory Forest Management, livelihoods and sustainable development. The conference was held in March and was attended by senior government representatives, 14 different African countries and prominent donor organisations. BERSMP sponsored the session on climate change, CDM and community forestry.

### **4.6. Improved / appropriate legal, policy and regulatory frameworks for Ecoregion(s) planning, CBNRM and protected areas.**

Lessons captured – best practice – publications  
Show and tell tours / Study tours  
Policy analysis – policy briefs produced  
Policy dialogue  
Media Outreach

#### **4.6.1 Lessons captured – best practice – publications**

A draft programme brochure is prepared and is under review. Materials are being gathered for setting up a web-site.

#### **4.6.2 Show and tell tours / Study tours**

**Parliament members visit to Chilimo** - A field visit was organized for the parliament's NR & EP standing committee including representatives from other standing committees. The trip was organized by FARM/SOS in collaboration with MELCA Mahber, FFE and

FCF as part of the policy advocacy efforts being made by BERSMP. A total of 40 participants attended the visit. The field visit programme included two presentations (one on Chilimo PFM activities and another one on Development of PFM in Ethiopia), site visits, discussion with PFM groups and tree planting (as part of the millennium initiatives). The event was captured and transmitted by newspapers and electronic media.

#### **4.6.3 Policy analysis - policy briefs produced**

**Participation in a public hearing** - The BERSMP was represented during the public hearing organized for stakeholders to discuss on the draft forest proclamation at the federal parliament. The draft proclamation was discussed previously by a lobby group that includes FARM/SOS, MELCA Mahber, Forum for Environment (FFE), Ethiopian Forest Coffee Forum (EFCF), Civil Service College and Biodiversity Network. It was found out that the concepts of PFM were not clearly included in the draft document. On the forum, requests were presented (together with proposals) to the joint session of Rural Development and Natural Resources & Environment Protection (NR&EP) standing committees for facilitation of the inclusion of communal forests as a stand alone ownership type, together with private and state forests.

#### **4.6.4. Policy dialogue**

**Parliament briefing on “Green Forum” symposium** - As a follow up of the “Green Forum 2006”, a session was organized to brief the NR & EP standing committee members on the outcome of the forum. The proceeding of the forum titled “Taking stock of Ethiopia’s environment” was distributed. ‘The Forest Ecosystems of Ethiopia’, one of the five papers in the proceeding that explains the extent, threats and options for forest conservation in Ethiopia (based on PFM experiences) was briefly presented to the committee members. This has served as a forum to bring the forest situation in Ethiopia and the potentials of PNRM to the attention of law makers.

**Strengthening advocacy working group** - As an attempt to keep together and strengthen the organizing committee members of the International conference on PFM in Africa for future policy advocacy, an occasion for expression of admiration for a job well done was organized. It is remembered that the conference has been a success. The members of the group are actively participating in natural resources related policy advocacy. Discussions were made on strengthening the working group in the future.

#### **4.6.5 Media Outreach**

**E-bulletin** - The first Bale e-bulletin was produced. It has been distributed on-line to relevant organizations and individuals and will appear quarterly from now on.

**Production of materials for media** - Two items (an interview for a FM radio station and a newspaper article) were facilitated. The radio time focussed on the extent, potentials, threats and future directions (taking into consideration PFM options) of the forest resources of Ethiopia. The other item, the article on a newspaper, was related to the MP’s visit to a PFM site and advocacy on forest policy.

## 5. Activities analysis

Table 1: Progress against plan

Activities	Unit	Annual Target	Target for 1st semester 2007	Achievements (Quantitative/Qualitative)		Corrective measure
				Achievement	Deviation	
<b>1. Eco- Region planning</b>						
<b>1.1 Resource information gathering</b>						
-Secondary data -Information gap analysis	Woreda	14	4	4 woreda base maps 1 EcoRegion base map (14 woredas)		
<b>1.2 Resource/human mapping and analysis</b>						
-Satellite image interpretation and GIS mapping	Woreda	14	4	0	Satellite Images purchased in June	Image interpretation to commence in 2 <sup>nd</sup> semester
Participatory NR mapping	Woreda	4	4	8 participatory maps at kebele level – in the 4 priority woredas		
<b>1.3 Information gap filling</b>						
Field investigation	Study	4	1	3 NR values ITK TH	+2 Opportunity to work in partnership with BMNP/FZS	
Eco-Region plan development	Plan	1	0			
Target kebele/resource site identification	Woreda	4	4	8	8	
Specific skill training	No. of Training	4	2	1(Experience exchange visit to RCMRD- Kenya) was conducted by 1 planning specialist, 2 from Government.	1 work with FZS international planning expert unachieved due to her time constraints	Programme is building contacts in this specialised field
<b>2. Institutional capacity building</b>						
2.1 Community training needs assessment	No.	1	1	50% TNA conducted during woreda intro. tours and during the participatory mapping	50%	TNA is ongoing as part of PLA process
Government training	No	1	1	75 % TNA	25%	TNA ongoing

Activities	Unit	Annual Target	Target for 1st semester 2007	Achievements (Quantitative/Qualitative)		Corrective measure
				Achievement	Deviation	
needs assessment				conducted during Woreda planning w/shop		as understand of prog. improves
<b>2.2 Delivering training for community</b>						
Community farmer to farmer exchange visit	No. of ex. Visit	4	1	2 visits - 1 SOS Sahel Borana PFM site 1 FARM-Africa Chilimo PFM site	+1 opportunity to build community to community dialogue	
Community level field work	No. of Meeting	16	8	8 Working in 8 selected Kebeles		
<b>2.3 Delivering training for the government staffs</b>						
Training and courses in specific areas	Training	4	2	2	Early opportunity of joint funded IUCN Tanz. vist	
10 <sup>th</sup> grade completed students in Diploma	No. Students	28	28	Selection of candidates completed / students enrolled on courses		
Upgrading from Diploma to BSc	No Students	28	28	selection of candidates completed / students enrolled on courses		
Special study to MSc level	No. Students	3	0	Not planned		
<b>Gov. to Gov. developmt coordination and communication (Reg. Zone. Woreda working groups)</b>						
Regional Advisory Committee Meeting	No. of meeting	4	2	1	1 frequent meetings by the government officials	Stress importance. Combine with other activities
Zonal Steering Committee	No. of meeting	4	2	1	1 frequent meetings by the government officials	Stress importance. Combine with other activities
Woreda coordinating committee	No. of meeting	4	2	2 ( with priority woredas)		
CBO ident, establish and strengthening	CBO	20	6	1 WAJIB coop union – linked through GTZ	5 Field work at early stage	Stakeholder analysis – next action
<b>3. Sustainable Natural Resource</b>						

Activities	Unit	Annual Target	Target for 1st semester 2007	Achievements (Quantitative/Qualitative)		Corrective measure
				Achievement	Deviation	
<b>Management</b>						
<b>3.1 Resource use and users investigation</b>						
Stakeholder analysis, Participatory resource mapping & assessment, Set up manage groups	Resource sites	8	8 – 25%	8 - 25% Working in 8 Kebeles PNRM mapping	25% - field work at an early stage	Site / comms. / field work - now all up and running
<b>3.2 Negotiation- Plan and agreements</b>						
Negotiation meetings, Plan and agreement formulation & writings	No. Groups	4	0	Not planned		
<b>3.3 Plan implementation including stakeholder monitoring</b>						
Implementation of resource management plan	Plan	2	0	Not planned		
Benefit sharing mechanisms negotiated with RM agreements	Resource	2	0	Not planned		
<b>3.4 Conflict management</b>						
Conflict management mechanisms set out, Conflict response strategies	Working groups	4	0	Not planned		
<b>3.5 Formalization of new NRM systems</b>						
Policy lobbying strategy, Regional policy reflection	Working group	4	0	Not planned		
<b>4. Community NR based Livelihoods</b>						
Alternative livelihoods option inventory/identification	No. of livelihood	10	5	5 (coffee, essential oil, medicinal plants, herbs/fruit/veg comb honey id by consultant / BERSMP team		
NR based (forest coffee, fishing, bamboo, trophy hunting) enterprise & market feasibility	Business plan	20	10	50 % (activity plan for business development is prepared) Activs. as above.	50 % (activity plan for business development is prepared)	
Government /community specific skills development	Training	8	2	2 Kenya visit (gov) MELCA (comm.)		
Linkage with public and private sector on NR enterprises developed	No. Business	5	2	6+ business contacts made	+4 business partnership takes a lot of	

Activities	Unit	Annual Target	Target for 1st semester 2007	Achievements (Quantitative/Qualitative)		Corrective measure
				Achievement	Deviation	
(On job training, Practical training courses, Exchange visits)					negotiation	
Livelihood diversification Implementation (CDF)	No. of groups	20	5	1 Wajib Coop union	Community groups not yet set up	To be done as part of the stakeholder analysis – next action
<b>5. Sustainable financing</b>						
Develop sustainable finance options	No. of studies	3	1	0	This is a new field with little in-country experience or resource persons	Resource person to start with UNDP
Increase /retain/ local level revenue and tax incomes	Revenue retaining systems	2		Not planned		
Eco-region (s) sustainable finance options established						
Concessions for consumptive utilization	No. of concessions	3	1	0	Sports fishing and Trophy hunting review	Work developing for 2 <sup>nd</sup> semester
Government capacity of sustainable financing built	PFM conference.	1		1 Climate change and CDM in Int. PFM conference		
<b>6. Improved/ appropriate legal, policy and regulatory frameworks</b>						
<b>Publications</b>						
	Website	1	1	0	Limited materials available	To be established in the 2 <sup>nd</sup> semester
	Brochure	1		1 Draft	Draft to be approved	Follow up with FARM
	Poster	1				
	e-bulletin	3	1	1 First edition out		
<b>Study tours</b>						
	Parliamentarians	2	1	1 NR and EP S.C. Parliament to Chilimo PFM site		
	Gov. tours	2	1	0	Busy schedules with senior gov officials	Continue to urge / pressure

Activities	Unit	Annual Target	Target for 1st semester 2007	Achievements (Quantitative/Qualitative)		Corrective measure
				Achievement	Deviation	
Policy analysis/ policy brief	Policy strategy/ briefs	3				
Policy dialogue	Panel discuss	3	1	1 Green Forum Panel discussion		
Media out-reach	Produce material for media	4	1	2 (one FM radio time and An article on newspaper)		

## **6. Office Construction**

The construction of the new BERSMP office is well under way. The tendered contract was awarded to Simur General Contractors, who took control of the site in May. Actual ground works commenced soon after. The Office Construction project is due to be complete by November of this year.

## **7. Consultancies and special studies**

1. Survey to Gauge the sports fishing potential in the Bale Eco-Region Sustainable Management Programme. Rhys Davies. February 2007. Copies available from the FARM-Africa – SOS Sahel PNRM unit FARM-Africa Addis Ababa (will be available on the web site).

2. Natural Resource Products opportunities and potentials Study, Bale Mountains, Ethiopia. Copies available from the FARM-Africa – SOS Sahel PNRM unit FARM-Africa Addis Ababa (will be available on the web site).

## **8. Visits to the BERSMP**

In April 2007 the BERSMP team hosted two important Donor and organisational visits to Bale. The Ambassador and first Secretary of the Netherlands Embassy visited the Bale Programme in order to learn more about the progress and potential of the new programme. Meetings were held with Government and Community partners as well as field site visits (see Bale e-bulletin 1 for more detail).

Senior FARM-Africa UK / Addis Ababa office staff visit the programme. Again, meetings were held with Government and Community partners as well as field site visits.

## **9. Activities and Budget Planning for 2007 - second semester**

A revised first and second semester budget has been submitted for Donor approval in the month of June 2007.

## **10. Financial Utilization of 1st Semester 2007**

The remaining balance of € 318,494 (from previously transferred budget) was used during the semester of which € 306,235.00 has been utilized in the reporting period. For details, please see the financial report annexed to this report (annex 1). Please note that the remaining balance is shown after the exchange rate effect adjustment has been made as indicated in the audited financial report of 2006.

## Annex 1: Financial report 1<sup>st</sup> semester of 2007

### BALE ECO-REGION SUSTAINABLE RESOURCE MANAGEMENT PROGRAM EXPENDITURE REPORT FOR THE PERIOD OF JANUARY -JUNE 2007

(Exchange rate used: weighted average from June –July 07 = 11.7994)

BUDGET LINE		ANNUAL BUDGET	EXPENDITURES
1	1. Activity Based Budget	€	TOTAL €
1.1	Output 1: Eco-region Plan completed and being used		
1.1.1	Mapping & Remote Sensing Data	40,000.00	36,260.00
1.1.2	EcP Workshops & Visits	4,500.00	2,864.00
1.1.3	Resource Base Investigation	4,320.00	2,547.00
1.1.4	Technical Facilitation - Planning Specialist	15,000.00	-
1.1.5	Stakeholder Meetings	5,500.00	-
1.1.6	Data review & Compilation	8,000.00	-
1.1.7	Community Profiles and settlement dynamics (Local Contract)	8,000.00	-
1.1.8	Eco-system Monitoring System Design	-	-
1.1.9	Monitoring & Database Centre Establishment	-	-
1.1.10	Publications (Plans & Maps)	2,000.00	101.00
	<b>Sub Total Output One</b>	<b>87,320.00</b>	<b>41,772.00</b>
1.2	Output 2: Stronger Government /Community institutional capacity for sustainable NRM		
1.2.1	Training Needs Assessment	1,380.00	525.00
1.2.2	Training & Courses on specific areas	13,500.00	11,222.00
1.2.3	Training 10 grade complete students in Diploma course	9,600.00	9,191.00
1.2.4	Upgrading from Diploma to BSc	9,000.00	-
1.2.5	Special study MSc	22,500.00	-
1.2.6-8	Regional Zonal & Woreda Advisory committee Meeting	13,400.00	3,230.00
1.2.9	Farmer-Farmer Exchange Visits	5,000.00	3,284.00
1.2.10	Community-Govt PLA Activities, Workshops & Stakeholder Meetings	4,200.00	3,150.00
1.2.11	CBO Development, Mentoring/Training (1 per kebele per month)	4,400.00	-
1.2.12	Social services support/HIV/RH		

BUDGET LINE		ANNUAL BUDGET	EXPENDITURES
		15,000.00	-
	<b>Sub Total Output Two</b>	<b>97,980.00</b>	<b>30,602.00</b>
<b>1.3</b>	Output 3: Sustainable NRM and Conservation systems in place, incorporating different environmental and community needs		
1.3.2	Investigation, Negotiation and Implementation	4,000.00	2,407.00
1.3.3	Developing Management systems baylaws, agreements on different resource management	4,000.00	1,440.00
1.3.4	Support Negotiation and Implementation	4,000.00	2,388.00
1.3.5	Enforcement Task Force (Rules & Regulations)	600.00	-
1.3.6	Benefit Sharing Agreements Establishment	3,000.00	2.00
1.3.7	MELCA (local NGO) Community Extension	20,000.00	9,132.00
	<b>Sub Total Output Three</b>	<b>35,600.00</b>	<b>15,369.00</b>
<b>1.4</b>	Output 4: Community NR based livelihoods diversified		
1.4.1	Diversified Livelihoods Options Feasibility Assessment	4,320.00	6,786.00
1.4.2	Small & Medium Business Feasibility Plans and market analysis study	4,500.00	3,722.00
1.4.3	Livelihoods/Business Training for Community	2,500.00	1,644.00
1.4.4	Livelihoods/Business Training for Govt	4,000.00	304.00
1.4.5	Tree Seedling Development Support	50,000.00	18,894.00
1.4.6	CDF financed community dev't activity	23,180.00	-
1.4.7	Private Sector (Small Business Devt)	4,500.00	-
1.4.8	Develop CBT infrastructure	7,500.00	-
1.4.9	Livelihood Dev't Promotion & Exchange	5,000.00	2,263.00
1.4.10	Tourism Fair/Expo	-	-
1.4.11	Tourism Network Establishment	-	-
1.4.12	TH Partnership Establishment	1,000.00	-
1.4.13	Sport Fishing Working Groups Establishment & Training	4,500.00	-
1.4.14	Trout fish farm set up	3,000.00	-

<b>BUDGET LINE</b>		<b>ANNUAL BUDGET</b>	<b>EXPENDITURES</b>
1.4.15	Govt Training in TH/SF Support, Management & Enforcement	3,000.00	-
1.4.16	Tourism Learning Exchange	3,000.00	2,258.00
1.4.17	Natural Resource Based Industry Support/woreda office scale up	-	-
1.4.18	Local Tourism Office Start-up Grant	-	-
	<b>Sub Total Output Four</b>	<b>120,000.00</b>	<b>35,871.00</b>
<b>1.5</b>	Output 5: Sustainable financing mechanisms in place for the Bale Ecoregion which benefit government and communities		
1.5.1	Sustainable Financing (Review & Development)	15,300.00	-
1.5.2	Revenues and local government Financing mechanisms	2,880.00	-
1.5.3	Benefit Sharing procedures guide	-	-
1.5.4	Establish SF mechanisms	7,000.00	-
1.5.5	Share experience on SF mechanisms	6,740.00	-
1.5.6	Concessions for consumptive utilisation (hunting / fishing )	-	-
1.5.7	Gov capacity for sustainable financing built	2,000.00	-
	<b>Sub Total Output Five</b>	<b>33,920.00</b>	-
<b>1.6</b>	Output 6: Improved and appropriate Legal, policy & regulatory frameworks in place, for ecorgion planning, CBNRM and protected area.		
1.6.1	Policy Framework Study and Working group	3,900.00	1,189.00
1.6.2	Policy Briefs	2,800.00	520.00
1.6.3	Policy Tour	5,740.00	-
1.6.4	International Study Tours	8,740.00	-
	<b>Sub Total Output Six</b>	<b>21,180.00</b>	<b>1,709.00</b>
	<b>Sub Total Outputs 1-6</b>	<b>396,000.00</b>	<b>125,323.00</b>
<b>1.7</b>	Technical Field Based Project Staff		
1.7.1	Field Programme Manager (1)	47,123.00	30,480.00
1.7.2	Planning specialist (1)	9,991.00	3,369.00
1.7.3	Livelihood Specialist (1)	9,991.00	2,707.00

<b>BUDGET LINE</b>		<b>ANNUAL BUDGET</b>	<b>EXPENDITURES</b>
1.7.4	Participatory Development Officers (3); Forestry, Grassland/livestock & Water resources Advisors	24,974.00	7,565.00
1.7.5	Woreda Level Community Development Facilitators (4)	15,519.00	4,465.00
<b>1.8</b>	Technical Field Based Government Focal Persons		
	<b>Addis support unit with in Government office</b>		
1.8.1	General Manager		-
1.8.2	Deputy General Manager		-
1.8.3	Regional Coordinator	8,000.00	1,017.00
1.8.4	Regional Level Focal Person	-	-
1.8.5	Regional GIS expert	-	-
	<b>Zonal support unit with in Government office</b>		
1.8.6	Zonal Programme Coordinator	2,205.00	167.00
1.8.7	Zonal Level Focal Person	567.00	-
	<b>Woreda support unit with in Government office</b>		
1.8.8	Woreda Level Focal People (4)	2,268.00	-
1.8.9	Woreda Level Community Development Facilitators (4)	2,268.00	99.00
1.8.12	Other woreda and zonal NR staff (115)		-
<b>1.9</b>	<b>PNRM Unit Technical Support</b>		
1.9.1	PNRM Programme Coordinator	16,831.00	7,735.00
1.9.2	Information Technologist	4,000.00	-
	<b>Sub Total Technical Staff</b>	<b>143,737.00</b>	<b>57,604.00</b>
	<b>Coordination, Monitoring and Evaluation</b>		
1.9.3	Publication	4,000.00	998.00
1.9.4	Media outreach (sponsor programs)	6,250.00	434.00
1.9.5	Mid-term Final Review (2 consultants)	-	-
1.9.6	Monitoring cost Regional partners	3,750.00	-
1.9.7	Monitoring cost (FARM/SOS UK and Addis)	18,000.00	4,932.00
	<b>Subtotal Coordination, Monitoring</b>		

BUDGET LINE		ANNUAL BUDGET	EXPENDITURES
	<b>and Evaluation</b>	<b>32,000.00</b>	<b>6,364.00</b>
	<b>Total Activity Based Budget</b>	<b>571,737.00</b>	<b>189,291.00</b>
<b>2</b>	Capital Investment		
	<b>Equipment, Materials &amp; Supplies</b>		
<b>2.1</b>	<b>Transport</b>		
2.1.1	WD Hardtops & 2 Double cabin	51,000.00	164.00
2.1.2	Tractor and trailer	-	-
2.1.3	Motorbikes	40,000.00	14,085.00
2.1.4	Horses & Tack	2,700.00	-
<b>2.2</b>	<b>Office, Office Furniture &amp; Computer Equipment</b>		-
2.2.2	Computers & Printers	15,000.00	12,702.00
2.2.3	Computers Accessories & GIS Software	4,000.00	3,755.00
2.2.4	Fax machine	500.00	-
2.2.5	Data Projector	-	
2.2.6	GIS Hardware (Plotter & Monitor)	-	
2.2.7	Office Furniture	8,000.00	2,739.00
2.2.8	Field Equipment, e.g. GPS & Forestry Equipment	10,000.00	-
2.2.9	Solar Power	4,000.00	-
2.2.10	Camping Equipment	10,000.00	2,650.00
2.2.11	Backup Generator	-	-
2.2.12	Photocopier	-	-
2.2.13	Digital Cameras	2,500.00	2,170.00
	<b>Total Capital Investment</b>	<b>147,700.00</b>	<b>38,265.00</b>
<b>3</b>	Recurring Expenditure		
<b>3.1</b>	Local Office/Project Running Costs		-
3.1.1	Vehicle Running Costs - Field	20,200.00	9,096.00
3.1.2	Vehicle Running Costs - PNRMU	8,300.00	1,155.00
3.1.3	Vehicle Hire	6,505.00	5,715.00
3.1.4	Per diems -Travel Bale	4,320.00	3,084.00

<b>BUDGET LINE</b>		<b>ANNUAL BUDGET</b>	<b>EXPENDITURES</b>
3.1.5	Per diem Travel PNRM office	2,880.00	536.00
3.1.6	Consumables - Field Office Supplies	12,000.00	6,374.00
3.1.7	Consumables - PNRMU Office Supplies	3,000.00	677.00
3.1.8	Office Rent/Robe & PNRMU office share	-	
3.1.9	Office Construction at Robe	48,000.00	7,367.00
3.1.10	Field Office Services (Tel/Fax, VSAT, Electricity, Maintenance)	8,080.00	5,338.00
3.1.11	PNRMU Office Services (Tel/Fax, Electricity, Maintenance)	4,040.00	592.00
	<b>Subtotal Local Office/Project Running Costs</b>	<b>117,325.00</b>	<b>39,934.00</b>
<b>3.2</b>	<b>Administrative Support Staff Costs</b>		
3.2.1	Administration & Finance Officers (2)	11,499.00	2,993.00
3.2.2	Store Keeper/Cashier (1)	2,800.00	676.00
3.2.3	Secretary (1)	2,500.00	692.00
3.2.4	Office Assistant (1)	1,466.00	355.00
3.2.5	Drivers (2) and Driver Mechanic (1)	7,399.00	1,891.00
3.2.6	Guards (3)	4,655.00	991.00
	PNRM Unit Administration Support		-
3.2.7	Senior Finance Officer	11,587.00	3,315.00
3.2.8	Driver (1)	1,300.00	-
	<b>Subtotal Administrative Support Staff</b>	<b>43,206.00</b>	<b>10,913.00</b>
	<b>Total Recurring Expenditure</b>	<b>160,531.00</b>	<b>50,847.00</b>
	<b>Total Direct Project costs (DPC)</b>	<b>879,968.00</b>	<b>278,403.00</b>
	Admin. Charge 10%	87,997.00	27,832.00
	Contingency(5% DPC)	43,998.00	-
	<b>Total</b>	<b>1,011,963.00</b>	<b>306,235.00</b>